

WYZENBEEK TESTER CHRYSLER CONVERSION KIT

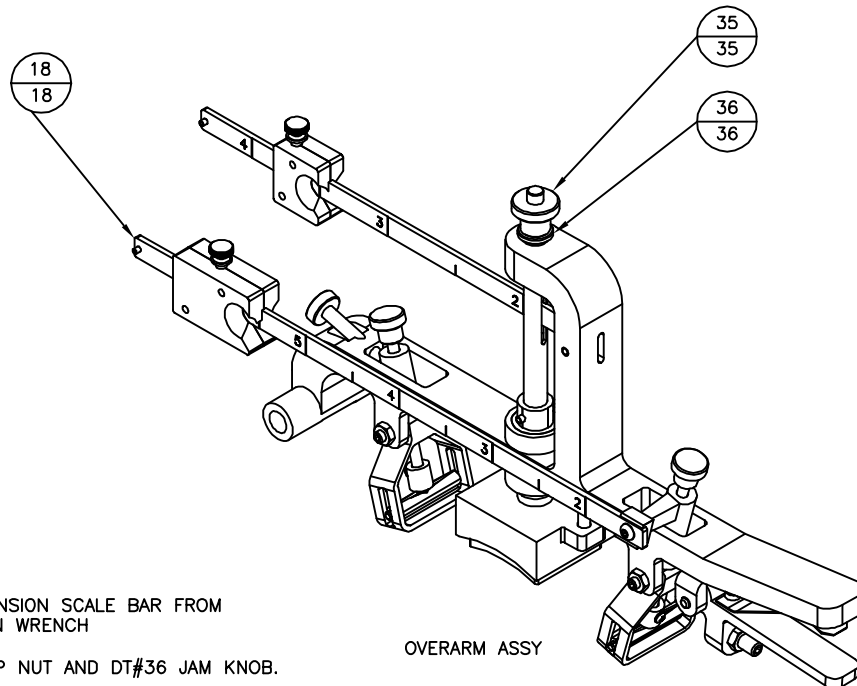


FIGURE 1

FIRST REMOVE DT#18 TENSION SCALE BAR FROM CASTING USING AN ALLEN WRENCH

NEXT REMOVE DT#35 TOP NUT AND DT#36 JAM KNOB.

OVERARM ASSY

FIGURE 1

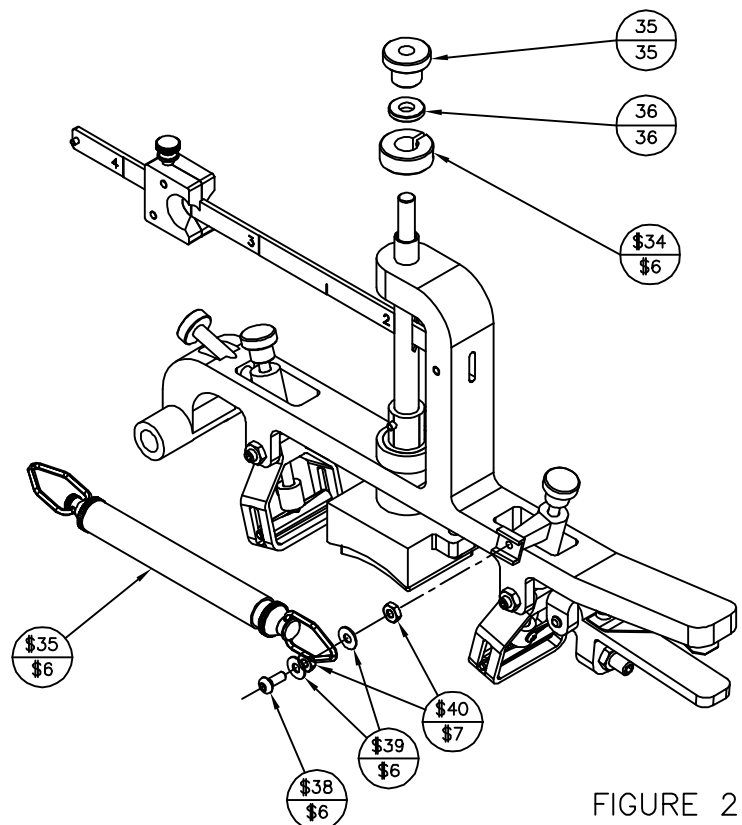


FIGURE 2

PLACE \$34 ON DT#32 ADJUSTABLE ROD ASSEMBLY AND PUT DT#36 JAM KNOB AND DT# 35 TOP NUT.

NEXT PLACE THE CHATILON SCALE ON TO THE ARM ASSEMBLY USING THE FASTNER SUBASSEMBLY PROVIDED \$35, 38, 39, AND 40. AS SHOWN.

NOTE: MAKE SURE THAT THE "WINDOW" IN THE WEIGHT WHERE THE NUMBER CAN BE READ, IS TOWARDS THE FRONT OF THE MACHINE.

CHRYSLER COVERSION OVERARM ASSY

FIGURE 2

WYZENBEEK TESTER CHRYSLER CONVERSION KIT

FIGURE 3
NEXT CONVERT ALL OVER ARM ASSEMBLIES TO
CHRYSLER CONVERSION.

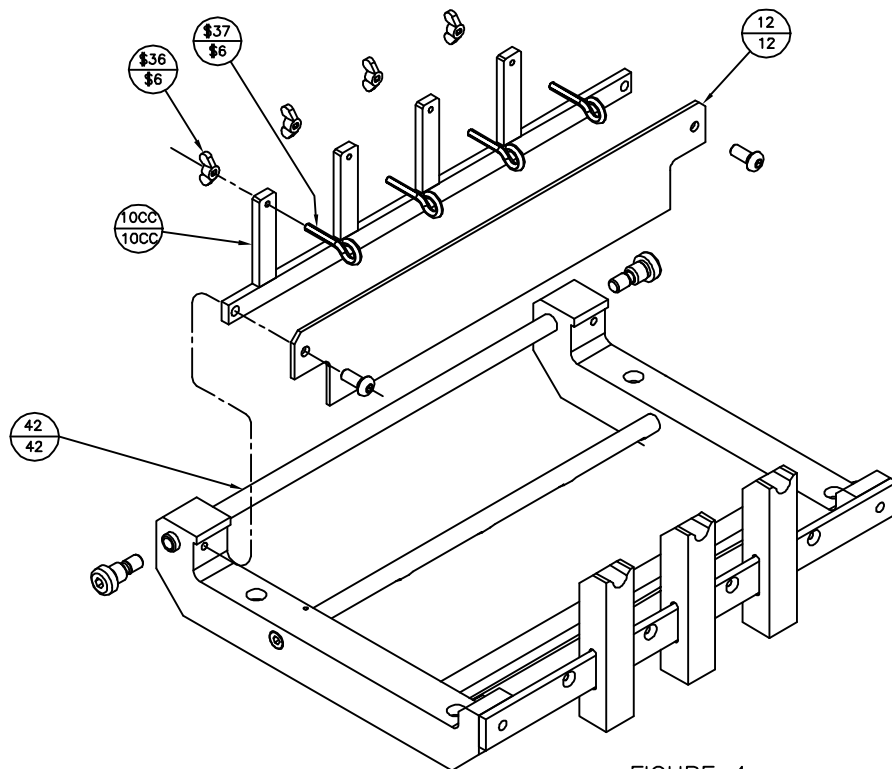
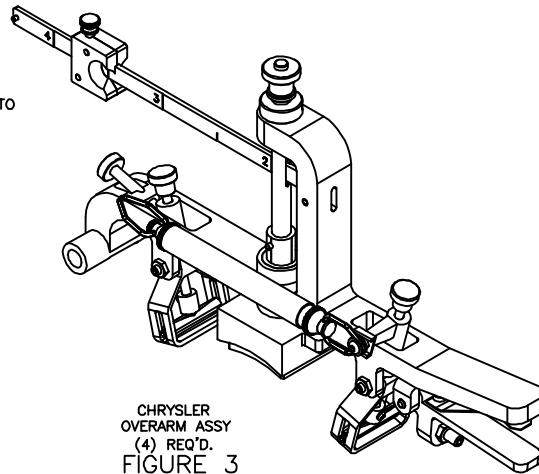


FIGURE 4

FIGURE 4
THAN ASSEMBLE DT#42 PIVOT ARM WITH THE OVER
ARM ASSEMBLIES.
NEXT ATTACH NEW DT#10CC WELDMENT AND DT#12 TO
VAC BLOCK DETAIL #8CC & 13CC. AS SHOWN
NOTE: ENSURE THE WELDMENT IS ORIENTED PER THE
DIAGRAM.

WYZENBEEK TESTER CHRYSLER CONVERSION KIT

FIGURE 5

ATTACH CHATILLON SCALES TO THE EYE BOLTS ON THE
WELDMENT.
PLACE PROTECTIVE POLYCARBONATE ENCLOSURE ON
MACHINE.

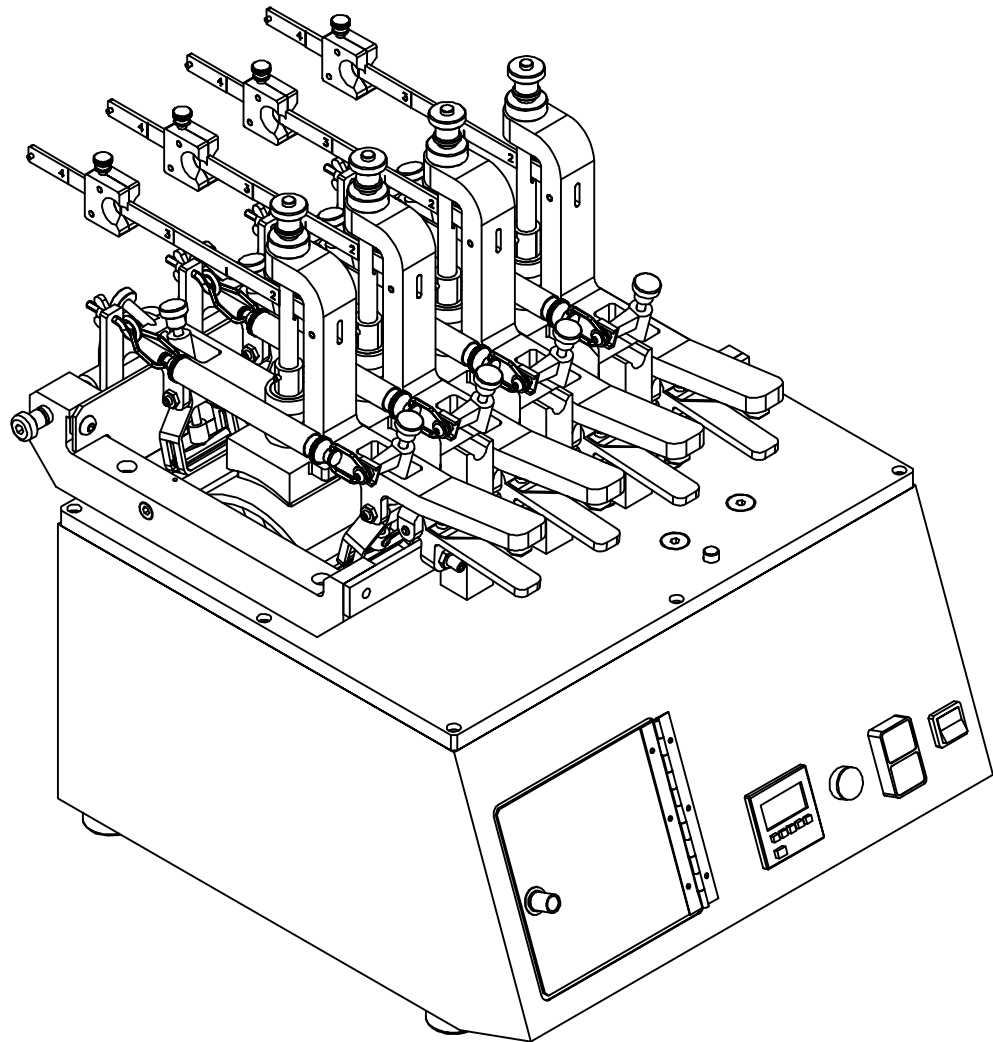


FIGURE 5